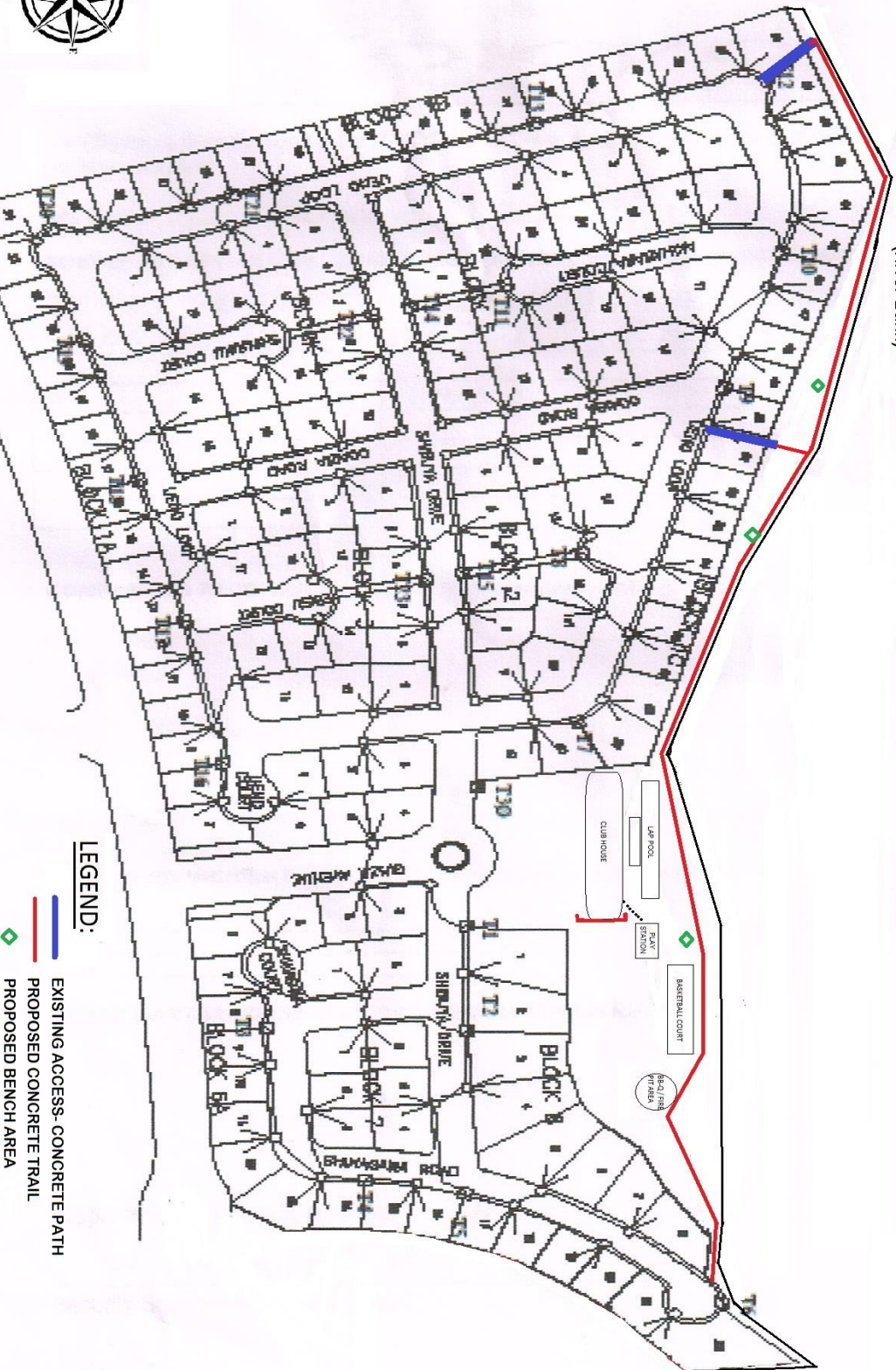


TOKYO MANSIONS

PROPOSED GREEN TRAIL PROJECT W/ BENCH REST AREAS

Justifications:

1. Concrete trail path will provide "accessibility" to Village's park, Common areas, and Open spaces.
2. Will provide TM Homeowners and Guests an attractive, safe, accessible trailway to walk, hike or jog while enjoying the outdoors and nature. Encourages physical activities by making use of our village's linear corridors.
3. Provision for Roving Security personnel to properly patrol security vulnerable areas along the North Perimeter Fence. (River Bank)



LEGEND:

- EXISTING ACCESS- CONCRETE PATH
- PROPOSED CONCRETE TRAIL
- ◆ PROPOSED BENCH AREA